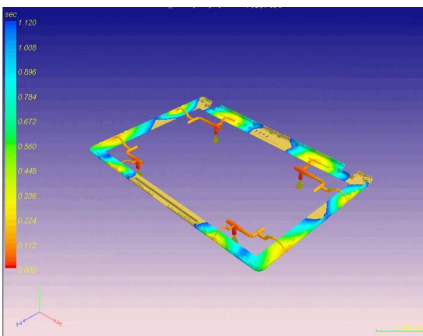




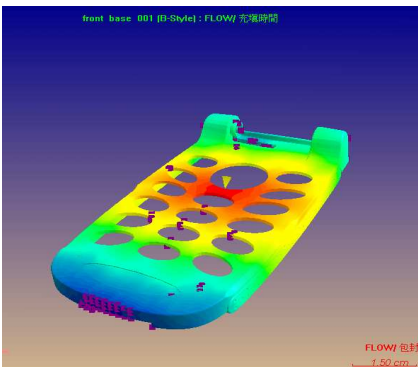
Simpoe-Mold

The Professional Plastic Injection Simulation Software

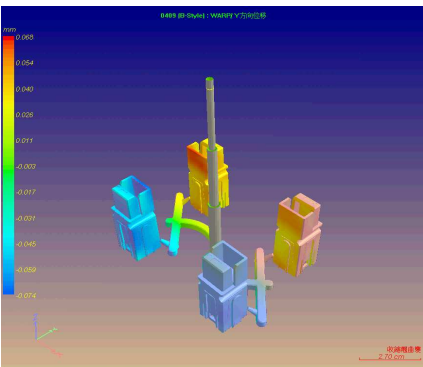
SIMPOE-MOLD® software allows simulation and optimization of the manufacturing of plastic parts, simple as well as complex, and in any size. SIMPOE-MOLD® avoids physical prototypes, drastically shortens, in a more and more competitive environment, development time and reduces time to market of new products.



Only 4 steps to conduct an analysis



User can predict flow pattern, weld line, air trap, short shot, ...



SIMPOE-MOLD® includes Flow-Pack, Cooling, Warp analysis modules

SIMPOE-MOLD® , thanks to its **user friendly interface, ease of use, fast learning curve and affordable price**, is targeted to **mold makers and rheology experts**, but also to **mechanical engineers in the engineering department** who, in a collaborative product development approach, want to take into account manufacturing constraints early in the product design cycle. The various integrated software modules of SIMPOE-MOLD® allow each user to perform the adequate analysis, depending on his/her degree of expertise.

SIMPOE-MOLD® software facilitates the work of the design engineers and mold makers **to optimize the design and manufacturing of plastic parts**, by helping them to decide on the best design and manufacturing parameters , such as part thickness, injection gate positions, welding line, cavities number and positions, cooling channels, etc..

SIMPOE-MOLD® software benefits from several man-years of advanced mathematical research combined with extensive hands-on manufacturing experience of several plastic industry professionals.

The SIMPOE-MOLD® software product suite includes the following integrated simulation modules :

■ **SIMPOE-MOLD® ENGINEER Package**

for simulating mold filling and packing, and for various injection techniques

- ◆ simple injection
- ◆ co-injection
- ◆ gas assisted injection
- ◆ reactive injection

■ **SIMPOE-MOLD® PROFESSIONAL Package**

for simulating , in addition, thermal exchange with the mold cooling channels. Available in all three styles.

■ **SIMPOE-MOLD® ADVANCED Package**

for simulating, in addition, warpage deformations in the three x, y and z directions. Available in all three styles.



Technical Specifications

- Input file format
Direct reading of STL files (AutoCAD, CATIA, Cimatron, Pro/ENGINEER, SolidWorks, Solid Edge, etc...)
Direct reading of NASTRAN format

- Pre-programmed and customizable resin materials library

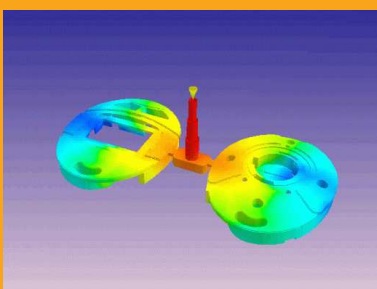
- Output formats
Dynamic display of many parameters, such as :
 - melt front
 - temperature
 - temperature distribution
 - pressure
 - pressure distribution
 - shrinkage
 - shear ratio
 - filling times
 - warpage
 - fiber orientation, etc..

Results also available in an ASCII file and HTML.

- Built-in mesher and runner and cooling channels editor.

- Measurement system :
SI metric and BTU

- System Requirement
 - MS Windows 2000 / XP
 - 256MB RAM or greater
 - Intel Pentium or AMD Athlon
 - 200MB HD space for install
 - Pointing device
 - CD ROM Drive



SIMPOE-MOLD®, based upon vigorous scientific foundation, is an integrated CAE software for the simulation of plastic injection molding processes. There are three styles software for SIMPOE-MOLD®, **B-Style** is a STL 3D solid based software, **C-Style** is a 3D mid-surface model software, and **E-Style** is a full 3D software.

B-Style (3D Solid Model Analysis)

C-Style (3D Mid-Surface Model Analysis)

E-Style (3D Full Solid Model Analysis)

B-Style, Use CAD Software 3D STL Model, Save Huge Amount of Operation Time

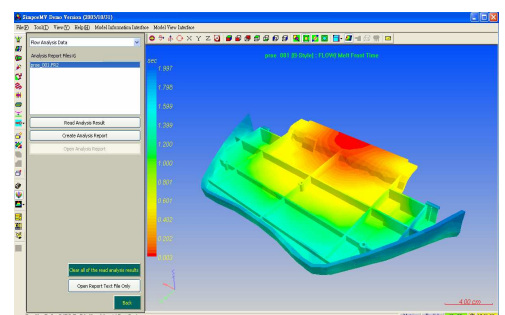
SIMPOE/B-Style directly reads general CAD/CAM software STL model files to conduct CAE simulation. It completely saves construction and graphic making of analysis model. It is not required to reconstruct any geometric models. Comparing with traditional CAE analysis process, above 90 % of the operation time could be saved. Instead of several days to weeks of developing time, it takes only some ten minutes to develop. Huge amount of development cost and time can thus be saved.

- Mid-surface Model is not required.
- Thickness indication is not required.
- Construction and editing is not required.

SIMPOE/B-Style could work with any STL physical model generation software including Pro/ENGINEER, I-DEAS, SolidWorks, Solid Edge, AutoCAD, Catia, SolidDesigner, Cimatron, Euclid, Unigraphics etc.

B-Style, Takes only 4 Steps to Conduct Analysis

1. Translating the CAD file
2. Select Material Property
3. Setting Process Condition
4. Set Gates Position



SIMPOE SAS (France)
Phone : +33 1 60 33 29 90
Fax : +33 1 60 33 29 99
www.simpoe.com
E-mail : info@simpoe.com

CADLM 9 rue R. Dautry 9110
Gif/Yvette - T : 0169072922
Datasheet GENEUR-11-05-UK

